

Long Range Transportation Plan Update Kick-off

Policy Advisory Council, July 11, 2017



Metro

Overview

BACKGROUND

1. About Metro
2. About Long Range Transportation Plans
3. Metro's Existing 2009 LRTP

A NEW LRTP

1. Approach to the New LRTP
2. Overall Process
3. The Policy Advisory Council's Role
4. Questions & Discussion

Metro's Transportation Responsibilities

Regional Planner

Regional Funding Partner

Regional Designer

Regional Builder

Regional Operator

...for Los Angeles County



What is a Long Range Transportation Plan (LRTP)?

- A plan for Los Angeles County to fund, build, manage and operate major transit, highway and active transportation projects
- Forecasts long range needs and funding availability, and plans accordingly
- Minimum 20-year horizon, but the Measure M expenditure plan horizon year is 2057
- Performance-based
- The implemented plan is based on expected revenue (fiscally-constrained)

Why Prepare an LRTP?

- **Transportation planning** is a cooperative, performance-driven process by which long and short-range transportation improvement priorities are determined (*FHWA and FTA, 2015*)
- Plan and program transportation investments comprehensively and thoughtfully using a participatory process
- Comply with federal and state law requirements
- Different than SCAG's Regional Transportation Plan but feeds into it, giving Metro flexibility
- Understand the availability of resources to address trends, needs and wants and make decisions to prioritize accordingly and strategize to achieve goals

Overview of the 2009 LRTP, As Amended

- 30-year planning horizon
- A tool for planning and funding capital projects, including Measure R
- Performance criteria emphasized ranking, selecting and prioritizing transportation projects
- Sustainability was a key guiding theme
- Focus was limited to multi-modal improvements within funding constraints
- Does not include recent State of Good Repair requirements



Why Does the LRTP Need an Update?

- Measure M sets the stage for a new, innovative LRTP because of its transformative scope and 40-year horizon
- Measure M established a new baseline from which to plan and program
- Adapt to ongoing population, demographic, employment, economic and fiscal changes
- Address evolving priorities
- Now is the time for Metro to be comprehensive and innovative

Approaches to the Update

- **Modular approach**—flexible and differentiated in recognition that agency staff, external partners and communities have varying levels of interests and responsibilities
- **Comprehensive approach**—will integrate and strengthen connections between existing plans and programs into the LRTP comprehensively and add new features to fill in gaps or provide for new wants
- **Dynamic approach**—will deliberately create areas of overlap between standalone modules to reinforce continuous integration and comprehensiveness, while allowing for the plan to address a continuum of timing milestones



Key LRTP Update Objectives

- Define and support a transportation vision for the region
- Work with our diverse partner communities to do so
- Set critical investment priorities with funds that are still challenged when compared to need
- Conduct the process with analytic discipline and transparency
- Ask the key questions; discover the answers through a methodical and participatory update process

LRTP Foundational Modules

Module 1 – Vision

Module 2 – Introduction

Module 3 – Understanding Needs, Wants and Conditions of:

- Our Communities
- Our Partners
- Our Metro Baseline

Module 4 – Values Framework

- Goals and Policies
- Performance Measures

LRTP Serve and Manage Modules

Module 5 – Transportation Network and Management Plan

- A Plan for Mobility and Access
- A Plan to Manage and Operate

Module 6 – Implementing the Plan

- A Plan to Build
- A Plan to Fund

Module 7 – Evaluation

- Commitment to Implementation
- Linked to Measure M Assessment Requirements
- Ensures a Continuously Reinforcing Plan

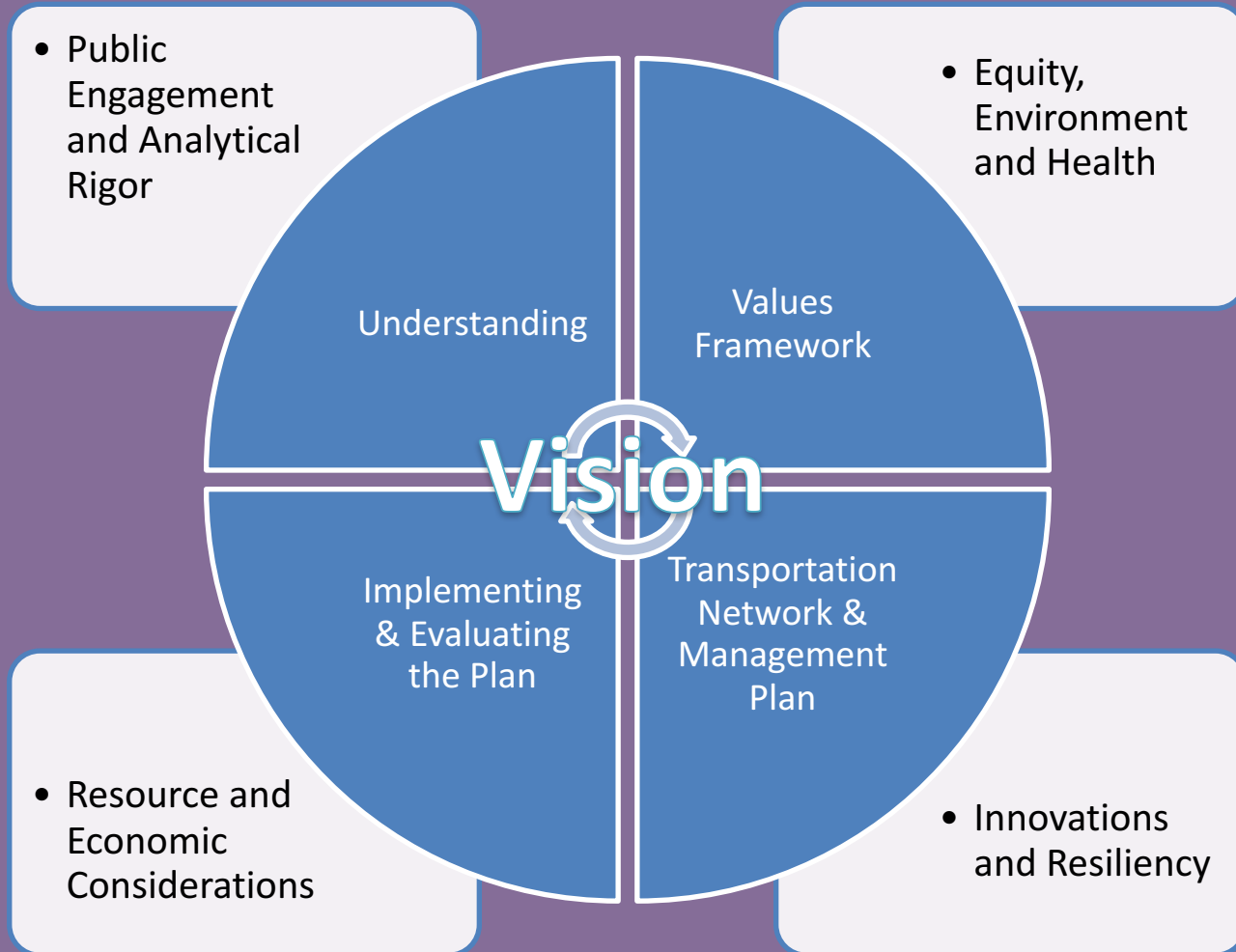
Guiding Themes

- Public Engagement and Analytical Rigor
- Equity, Environment and Health
- Resource and Economic Development Considerations
- Innovations and Resiliency

A Modular Continuum

Near Term and...

...Long Range



Metro

And More: A New Strategic Plan

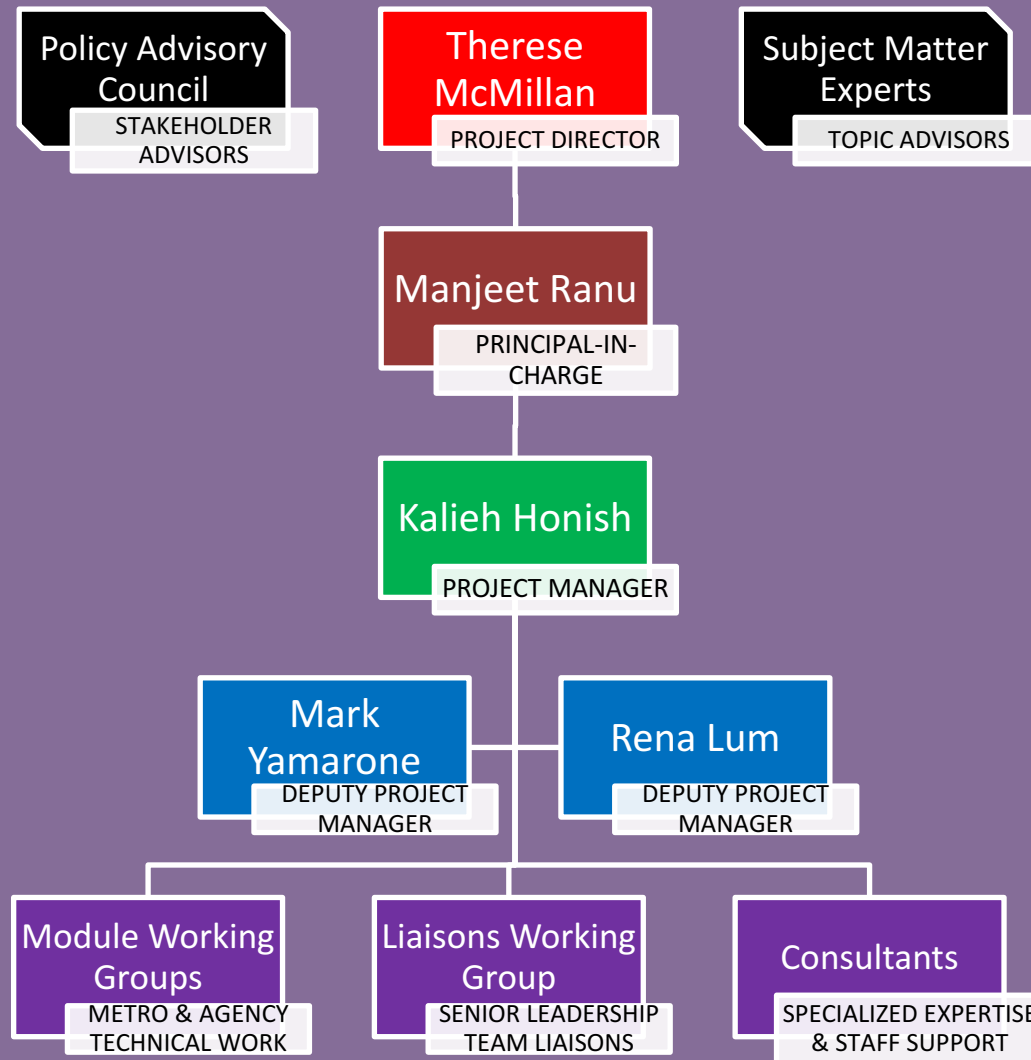


Overall Process FY2018 – FY2020

- Finalize work plan
- Determine project scope
- Assign resources
- Study, listen and learn: understanding
- Demonstrate understanding: values framework
- Create and evaluate alternatives
- Prioritize and strategize
- Select preferred plan
- Finalize LRTP and its implementation program



L RTP Update Leadership Team



Metro

PAC's Role in the LRTP Update

- Advisory group accountable to the Board of Directors
- Help guide the LRTP Update process by:
 - Identifying, focusing and clarifying topics
 - Providing input on options
 - Suggesting priorities
- Promote public/stakeholder engagement
- PAC and staff roles are different

Back to the PAC

Discussion & Questions